



Connecticut Orchid Society

Newsletter May 2015

56 Years & Growing

The First, Original Orchid Society in Connecticut

Affiliated with the American Orchid Society and Orchid Digest

Next Meeting

Wednesday, May 13, 2015
Cheshire Senior Center
240 Maple Ave., Cheshire, CT
(See last page for map & directions)

6:30 pm.: Doors open. Socializing begins. Come early and help set-up for the meeting.

7:00 pm: Business meeting begins

7:30 pm: Featured speaker/presentation begins.

Guests are always welcome!!!

Members with last names beginning with "N" through "Z", please bring goodies for this month's refreshment table.



For notice of last-minute or inclement weather cancellation, visit our website

www.ctorchids.org.

Connecticut Orchid Society (COS) is an incorporated non-profit 501 (c) (3) organization founded in 1959. Please consider making a charitable contribution to COS. Most donations made to COS are tax deductible.

This Month's Featured Event

Orechids of Mexico

Presented by T.J. Hartung
Pres. Vallarta Orchid Society
Puerto Vallarta, Mexico

Author: My Favorite Mexican Orchids
AOS Magazine Orchids, 2013, pgs. 82,
336, 598

and

The Orchid Clock
AOS Magazine Orchids, 2011, pg. 64



A & P Orchids will be bringing Mexican orchids, among others for sale at the meeting. Come early for the best selection.

Contact us:

Write: Connecticut Orchid Society, Inc.
Editorial Office
P.O. Box 198
Farmington, CT 06034-0198

E-mail: President Cheryl Mizak
president@ctorchids.org
Editor: Sharon SmithDelisle
editor@ctorchids.org

Inside this Issue

May 2015 Volume LVI Issue V

Regular Features

Next meeting1
This Month's Featured Event.....1
COS Mission Statement1
COS Membership Information2
COS Officers and Posts — 20152
Mentor List/Membership Policy/Content Acknowledgement2
Calendar of Upcoming Events2
Monthly Meeting Minutes3
Show Table3—4
President's Monthly Message.....5
News, Notes & Happenings5—6
AOS Corner, Laura Newton.....8
Upcoming Show Fliers.....7

Special Features

Harold Koopowitz announces that "Alas or Hooray Slipper Meristems are Here!"4
Judy Becker's Retirement Sale5
Monthly CheckList: *May, the Month of the Inner Pagan* by Thomas Mirenda.....6-7



Join us on Facebook

The deadline for submissions to the June issue of the newsletter is May 22nd

Connecticut Orchid Society Mission Statement

The Connecticut Orchid Society is an incorporated, non-profit association for the preservation and extension of knowledge concerning the conservation, ecology, science, cultivation, hybridization, appreciation and uses of orchids; and to carry on such activities as may be necessary or desirable to effectuate such purposes.

2015 Connecticut Orchid Society Officers & Posts

PRESIDENT	Cheryl Mizak	(203) 264-6096
VICE-PRESIDENT	George Sabolic	msabocik@cjrjyouth.org
TREASURER	Sherry Pendleton	(203) 272-3498
DIRECTOR -AT- LARGE	Ben Esselink	(203) 222-1694
DIRECTOR -AT- LARGE	William Pendleton	(203) 272-3498
RECORDING SECRETARY	Carla Koch	(203) 272-8121
MEMBERSHIP CHAIRPERSON	Mary Rampone	(203) 263-2831
CORRESPONDING SECRETARY	Sharon SmithDelisle	(203) 744-1849
EDITOR, LIBRARIAN/HISTORIAN	Sharon SmithDelisle	
AOS REPRESENTATIVE	Judy Becker	(860) 435-2263
CONSERVATION CHAIRPERSON	Vacant	—
SPECIAL EVENTS COORDINATOR	Cheryl Mizak	(203) 264-6096
REFRESHMENT COMMITTEE	Vacant	—
WEB MASTER	Vacant	—

Membership Policy Membership is open to anyone interested in orchids. Members join the Society by payment of annual dues. Memberships may be individual, student, family, life or honorary. Honorary membership is for life and is made by nomination of the Board of Directors and majority vote of the membership present at a regular meeting. The newsletter is published each month except July and August. Annual membership includes subscription to the newsletter — electronic or paper copy as determined by member preference.

Mentor List



The following COS members are available to answer your culture questions and help you with any orchid growing problems you may have:

Judy Becker judybecker40@att.net (860) 435-2263 (8:00--8:00 pm) Greenhouse growing

methods: Wide variety of species & hybrids

Sam Hinckley samuelhinckley@comcast.net (860) 688-0943 (After 7:30 pm) Windowsill growing methods: Species & hybrids

Glenn McGeough mcgeough7@gmail.com (203) 482-3973. Specializing in Cattleyas.

Jeffrey Richards Jeffrey.richards@snet.net (Contact anytime). Greenhouse growing methods: Specializing in Paphiopedilums.

Sharon SmithDelisle editor@ctorchids.org (203) 744-1849 (Contact anytime) Under lights & windowsill growing methods: Bulbophylums, Cymbidiums, Dendrobiums, Paphiopedilums, Miltoniopsis & mixed genera.

COS Membership Information : \$20/yr. Individual \$25/yr. Family \$200 Individual or \$250 Family Lifetime Membership (never pay dues again!)

Visit www.ctorchids.org to apply for/renew membership. We accept Paypal. Contact Membership Chairperson Mary Rampone at www.COSMembership@earthlink.net for more details.

Upcoming Events



May 13 — COS Monthly Meeting, Orchids of Mexico presented by T.J. Hartung, 7:30 pm, Cheshire Senior Center, 240 Maple Ave., Cheshire, CT

May 16 AOS Judging, Northeast Judging Center, Bartlett Arboretum and Gardens, Silver Educational Center, 151 Brookdale Rd., Stamford, CT, 12:00 pm. Send cut flowers to: John Sullivan, 299 Village Place, Wyckoff, NJ 07481

June 6 AOS Judging, Northeast Judging Center, Town Hill Botanic Gardens of Worcester, 11 French Dr., Classroom C, Boylston, MA, 12:00 pm. Send cut flowers to: Robert Winkley, 80 Florida St., Unit 9, Dorchester, MA 02124

June 10 COS Monthly Meeting, TBA, Farmington Senior Center, 321 New Britain Ave., Unionville, CT, 7:30 pm

June 20 AOS Judging, Northeast Judging Center, Bartlett Arboretum and Gardens, Silver Educational Center, 151 Brookdale Rd., Stamford, CT, 12:00 pm. Send cut flowers to: John Sullivan, 299 Village Place, Wyckoff, NJ 07481

August 16 COS Annual Picnic, home of Martha Shea, Wallingford, CT. More details to follow in June.

Presented by
THE CONNECTICUT ORCHID SOCIETY

October 16-18, 2015
at Van Wilgen's Garden Center
51 Valley Rd. (off Rt. 139) | North Branford, CT 06471
Friday 2pm - 5pm | Saturday 9am - 5pm | Sunday 9am - 4pm

For more information please visit us at www.ctorchids.org

Receive \$2.00 Off Admission.
Postcard must be presented at time of entry.

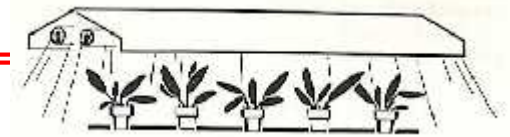
Content Acknowledgement All information, opinions, reporting and recommendations that appear in this newsletter are those of the editor (unless otherwise noted) and do not necessarily reflect those of the Connecticut Orchid Society. The editor is deeply indebted to the American Orchid Society for the free reprinting of articles, photos, tips & tricks, advice, checklists, etc. from its monthly magazine *Orchids* without which the COS newsletter, and its membership would be the poorer.



April Meeting Minutes

Carla Koch
Recording Secretary

April Show Table



COS MEETING 4-6-15

Kristen Uthus of New World Orchids spoke on Japanese orchids. The small *Sedirea japonica* (*Aerides* spelled backwards, as Will tells us) is intermediate growing, has green fragrant flowers patterned with pink, and likes to dry out. It has been reclassified as a phal. (*Nagoran*—orchid from Nago.)

A cooler growing orchid is *Cymbidium goeringii*, ranging in color from white to greenish-brown and also fragrant. It can briefly tolerate temperatures below freezing. (Sunran—spring orchid.) Tiny *Dendrobium moniliforme* is white or pink, deciduous, and needs cool temperatures to bloom. (Choseiran—long life orchid.) Some of these two types are pleasantly variegated.

The most revered orchid, however, is *Neofinetia* (now *Vanda*) *falcata*. (Fukiran—wind orchid.) Formerly only grown by samurai and shoguns, it can tolerate extremes of heat and cold, likes to dry out, and blooms in late spring to fall. Although it is an epiphyte, it is temperate growing. A moderate to low light plant, except for the variegated types, which prefer more light. Of the many myriad varieties, the Japanese recognize them for leaves, roots, flowers and even “tsuke” (where the leaf meets the stem.) Flowers are usually white, but also pink, yellow, green, and differently shaped. Prices can be very high for special varieties. Oddly enough, these types are not consistent in breeding. Special pots and a nice moss wrap encourage good growth and an aesthetic display.

Interestingly, many epiphytic orchids are found to photosynthesize as cactus do—a clue to their culture. Those with fat roots, such as cattleyas, need humidity, but not too much water.

—- Carla Koch

<u>Genus/Parentage</u>	<u>Owner</u>	<u>Culture</u>
<i>Asconopsis</i> Irene Dobkin	D. Landrey	i, l
<i>Brasidosteale</i> Gilded Tower 'Mystic Maze' (<i>Brassosteale</i> Summit x <i>Brassidium</i> Gilded Urchin) Syn. <i>Banfieldara</i>	C. Mizak	i, g
<i>Cattleya</i> Eximia var. <i>coerulea</i> 'Sea God' (<i>warneri</i> x <i>purpurata</i>) Syn. <i>Lc.</i>	D. Tognalli	i, w
<i>Cattleya</i> Jewel Box 'Scheherazade' Syn. <i>Slc.</i> (<i>Guaranthe aurantiaca</i> x <i>C. Anzac</i> (syn. <i>Slc.</i>))	M. Sabolcik	i, g
<i>Cattlianthe</i> Gold Digger 'Orglade's Mandarin' Syn. <i>Lc.</i> (<i>Cattlianthe</i> Red Gold x <i>Cattlianthe</i> War Paint (syn. <i>Lc.</i>))	B. Esselink	i, g
<i>Cattlianthe</i> Orglade's Spotlight (<i>Ctt.</i> Gold Digger x <i>Ctt.</i> Hazel Boyd 'Elizabeth) Syn. <i>Slc.</i>	D. Tognalli	i, w
<i>Cymbidium lowii</i>	C. Koch	c, g
<i>Dendrobium aberrans</i>	D. Tognalli	i, w
<i>Dendrobium</i> Fancy Angel 'Lycee' (Upin Red x Cassiope)	B. Pendleton	i, w
<i>Dendrobium</i> hybrid unknown	C. Koch	c, g
<i>Dendrobium parishii</i>	D. Landrey	i, l
<i>Dendrobium</i> Yellow Star (<i>finisterrae</i> x <i>polysema</i>)	B. Pendleton	i, w
<i>Epicattleya</i> Rene Marques 'Tyler'	B. Pendleton	i, w
<i>Leptotes pohlitinocoi</i> (2)	C. Mizak	i, g
<i>Leptotes pohlitinocoi</i> x <i>sib</i>	C. Mizak	i, g
<i>Maxillaria tenuifolia</i>	M. Sabolcik	i, g
<i>Oncosteale</i> Wildcat 'Green Valley' (<i>Oncosteale</i> Rustic Bridge x <i>Oncidium</i> Crowborough) (Syn. <i>Onc.</i> , <i>Odcdm</i> , <i>Colm.</i>)	M. Sabolcik	i, g
<i>Oncidium ampliatum</i>	M. Sabolcik	i, g
<i>Paphiopedilum</i> Egrets's Jewel (Luna Jewel 'Green Ice' x Egret's Flight 'Fullsome')	B. Esselink	i, g
<i>Paphiopedilum</i> Alwine (<i>sukhakulii</i> x <i>Goultenianum</i>)	J. Richards	i, g
<i>Paphiopedilum</i> hybrid unknown	J. Richards	i, g
<i>Paphiopedilum</i> hybrid unknown	M. Sabolcik	i, g
<i>Paphiopedilum malipoense</i>	J. Richards	i, g
<i>Paphiopedilum spicerianum</i> x self	D. Landrey	i, l

(Show Table con't on pg. 4)

(Show Table con't from pg.4)

<i>Phalaenopsis</i> Kaoda Twinkle 'Chocolate Drop' (<i>schilleriana</i> x Malvarosa Valentine Pearl)	D. Tognalli	i, w
<i>Phalaenopsis</i> Little Gem Stripes 'M' (Dtps. Taisuco Stripes x Phal. Taisuco Gem) Syn. <i>Dtps.</i>	D. Landrey	i, l
<i>Phalaenopsis</i> Taiwan Red Cat 'Red Cat' (Taiwan Smith x Kun-Cheng)	D. Tognalli	i, w
<i>Rhyncattleanthe</i> Uptown Girl (Edisto x Mem. Mario Lanza (Syn. <i>Pot.</i>))	B. Esselink	i, g
<i>Rhyncattleanthe</i> Young-Min Orange 'Golden Satisfaction' Syn. <i>Blc.</i> (<i>Rhyncattleanthe</i> Viola Nuggett x <i>Cattlianthe</i> Trick or Treat)	B. Esselink	i, g
<i>Sarcoglottis</i> <i>sceptrodes</i>	C. Mizak	i, g

This month we would like to thank Dave Tognalli for volunteering to research and prepare the April Show Table. While Judy Becker focuses on her health and getting better, Dave will be preparing the Show Table List for her.



Culture is as noted: c – cool i – intermediate w – warm
g – greenhouse ws – windowsill l – lights

“ALAS OR HOORAY SLIPPER MERISTEMS ARE HERE!”

— Harold Koopowitz

In his monthly column, *Calling all Paphiophiles*, in the Apr., May, June 2015 edition of *Orchid Digest* magazine, Harold Koopowitz laments “I have always dreaded the appearance of meristemmed slipper orchids, scared that the process would change slipper orchid breeding and availability.”

While many, many orchids such as cattleyas, phalaenopsis and others have been successfully meristemmed, for decades breeders have been unsuccessfully trying to develop techniques for meristemmed paphiopedilums. The process has remained elusive until now. Harold reports that although the process has been slow and is not comparable to the “wholesale clonal production of other orchids” nonetheless “the future has arrived”.

At the Joint First World Slipper Orchid Conference and 59th Paphiopedilum Guild Meeting, which was held in Hilo, Hawaii in January of this year, Dennis Kao from Chin Hua Orchids in Taiwan brought for sale flasks of Maudiae type *Paphiopedilum* Hsinying Alien 'Ching Hua' SM/TPS (Raisin Pie x Supersuk), an awarded plant which



***Paphiopedilum* Hsinying Alien**
(photo credit: Davesgarden.com, Kelley Macdonald 2007)

had been successfully meristemmed.

The online website Orchid Care Tips (www.orchid-care-tips.com/meristem.html) gives a good layman’s description of the meristem process:

“Meristem propagation is a laboratory technique to mass-produce clones of a particular orchid cultivar. Commercial

orchid breeders often want to produce numerous copies of a beautiful plant, so they use this technique.

An apical meristem, or growth tip, is cut out of a new growth on the orchid. (They just want the lump of undifferentiated, rapidly-dividing cells.) It’s then put onto agar or a similar [substance] in a manner similar to orchid seed propagation, and the flask containing the plant tissue is typically agitated, such as by putting it into a machine that constantly shakes it. The tissue is periodically divided, so that it never forms a large enough protocorm that the tissue differentiates and develops into a plant. After splitting the cloned tissue several times, eventually the numerous protocorms are allowed to grow and mature.”

COS is affiliated with, and subscribes to, the *Orchid Digest*. If you would like to read the entire article written by Harold Koopowitz, please see librarian Sharon SmithDelisle.

—-editor

President's Message



Cheryl Mizak

Happy Spring, the Humming birds are back!

New growth is finally starting to show on our orchids, which means it is time to get repotting chores under way.

Coming in June for those members who are interested in observing native, wild orchids in bloom, Jean Stefanik will lead a one day walk. She suggests Sunday June 21st should be perfect; Saturday June 20th will be the rain date. We will be on the look out for *Cypripedium reginae* among other orchids. We will car pool up to New Hampshire to meet at a location about 1 ½ - 2 hours north of Springfield Mass. If you prefer to spend the night in the area where we will meet there is a good selection of lodging. We plan to meet Jean about 10am to head off to a bog. As we will be in protected areas exact locations will be given only to those who are participating. If you are interested or want more information, please send me an email or give me a call. Yes, I am aware it is Fathers day weekend but the orchids have not received the memo, so why not bring Dad along? It is sure to be a memorable day.

This month we welcome T.J. Hartung, the president of the Vallarta Orchid Society, who will be speaking about Mexican Orchids. A&P orchids will be bringing some of their Mexican Orchids to support TJ's talk, and of course for your shopping pleasure.

Looking forward to seeing everyone in Cheshire on the 13th

---Cheryl Mizak



News, Notes & Happenings

Lauray of Salisbury Retirement Sale

Retiring after 48 years

BIG sale at greenhouse only!

Sales up to \$199.00 25% discount

Sales over \$200.00 50% discount

Cacti, succulents, begonias, gesneriads

& other tropicals

Orchids — a few in bloom or spike.

Also a few specimen plants

Limited supplies!

Friday, May 8 — Sunday, May 10th

Friday, May 15 — Sunday, May 17th

10:00 am — 5:00 pm

For other days or hours,

please e-mail Judybecker 40 @att.net

or (860) 435-2263

Board of Directors Meeting, Monday, May 11th —

The Board of Directors will meet Monday evening at 7:00 pm at Sherry & Bill Pendleton's home in Cheshire. Members are always welcome at these meetings. On the agenda for this month is an upcoming event in Derby on May 23rd, a discussion about holding a potting clinic, the upcoming native orchid walk in Mass. and a report on the progress on planning our annual show in October. Please contact Cheryl Mizak if you would like to attend (203) 264-6096.

Native, Wild Orchid Walk, Sunday, June 21st —

Jean Stefanik will lead a walk to look for native, wild orchids on Sunday, June 21st. Rain date is Saturday, June 20th. The walk is at a protected bog in Massachusetts. This will be an excellent opportunity to see spring flowering wild orchids such as *Cypripedium reginae* among others. Please contact Cheryl Mizak at (203) 264-6096 if you are interested in participating in this walk. The walk is not strenuous and there is some boardwalk partway into the bog.

(News, Notes & Happenings con't on pg. 8)



May: The Month of the Inner Pagan

Paying Attention to Repotting Now Will Coax Better Flowers in the Future

By Thomas Miranda

Long before the birth of Christ, people recognized the implications of spring, that time of year when the earth is about to burgeon to its full capacity of color, vitality and fruitfulness. There will always be something mystical about the 1st of May. In ancient Rome they held *Floralia*, the celebration of flowers, at the time of their greatest abundance. And all through Europe, but especially in the British Isles, the day was heralded by a dance around a blossom-adorned maypole.



Photo credit: Pinterest.com

These customs are part of an ancient tradition dating back from ages past when humans were more spiritually in touch with the earth. All around the world from Europe to Asia to America, spring festivals involve the making of garlands and arranging branches of flowering trees to enjoy their sweet fragrance and spring freshness in the house. In Hawaii, May Day is also Lei Day, and most people go about their day festooned

with flower garlands, tokens of love and tender feelings.

The ancient druids believed that the sun was reborn on May 1st and they would light fires to aid that star on which we're most dependent, in its all-important restoration. It is now, as the sun returns, that we feel the primal stirrings of our ancient ancestors and honor their customs. A time of unparalleled beauty, it was also believed that washings one's face in the spring dew on May 1st, beauty and youthfulness could be restored. Don't we all wish that were true? But there is something about May that assures us that youth and beauty are within us, no matter our age or what may show on the surface.

Action Days are longer, light levels are higher, the long tunnel of winter is now just a memory, with the garden in full swing, tulips and apple trees ablaze with color. Just about every orchid in your collection is growing. **It is tempting to ignore your orchids while so much is happening outside. But this is a prime time to repot your plants.** If you have a lot of specimens, you may want to prioritize which plants to repot first. **I generally pick the plants that have outgrown their pots first, and if roots are starting to form outside the pots, it's best to get them repotted with fresh mix so those roots can settle and develop properly.** Next I look for broken-down, decomposing mix. These plants tend to stay too damp and often will have weeds or ferns growing with the orchids in the pots. Such plants benefit the most from fresh mix because their new roots will no longer be waterlogged or have to compete for space.

Divide and Conquer Large specimen plants are spectacular, but they require special care. Countless times I have asked about memorable large specimens I saw five years ago at a show, only to find out they are now in orchid heaven. These huge specimens must occasionally be divided for

their health. Large plants often engulf a tiny pot or basket they were originally grown in and it can be quite difficult to extricate that rotting 20-year-old sphagnum moss that may be at the core of your prize specimen. Get a friend to help you break these plants up before they rot from the inside. Be sure to discard any old dead roots and pseudobulbs. There is nothing more heartbreaking than watching a deadly fungal or bacterial rot destroy your prize specimen from the inside. Small pieces that are inevitably generated by this process are wonderful submissions to your local club's sale table, or make excellent trades to other growers with huge specimens to divide.

Watering and Fertilizing Even into April, we had to watch ourselves so as not to overwater reawakening plants. **Unless you are growing summer-dormant European or Australian terrestrials, almost everything benefits from increased watering this month. Your plants will benefit from increased fertilizing this month.** I've been chided for recommending high-nitrogen fertilizers in the spring in this column. It works well for me and many others. But it is also true that the larger foliage generated by using it makes for softer, more disease-prone plants, particularly in phalaenopsis. If you've had such problems, try using a balanced fertilizer (more equal amounts of N-P-K, or nitrogen, phosphorous and potash, respectively at one-quarter to one-half strength. This will often produce smaller but more solid growths.)

Light In many parts of the country, where danger of frost has passed, orchids can be brought outside this month. One must be aware of the changes this can bring. **Orchids that have been in shady or stuffy conditions all winter must be acclimated to their new summer dwellings.** Generally, orchids do well with plentiful fresh air, brilliant light and pure rainwater, but such exposure must be done gradually so as not to shock your plants. Even though vandas, (Con't on pg. 10)

Monthly Checklist for May, con't from pg.9) cattleyas and dendrobiums may have needed some direct morning sun these last few months, they can still burn if brought into those conditions too suddenly. Plants in the greenhouse or on the windowsill will sense some changes as well. Vent your windows so that plants don't overheat when the sun shines in. Hopefully, by now, greenhouse shade is in place.

(News, Notes & Happenings con't from pg. 6)

Annual COS Picnic, Sunday, Aug. 16th --



Martha Shea has graciously offered to host our annual picnic at her home in Wallingford this year on Sunday, Aug. 16th. Further details, rain date, etc. will be provided in next month's newsletter.



Photo credit :gonewengland.about.com

— Thomas Mirenda, an AOS accredited judge, is the orchid collection specialist at the Smithsonian Institution. 3000 Cedar Lane, Fairfax, Virginia 22031. (e-mail



*The Long Island Orchid Society
in conjunction with Planting Fields Arboretum State Historic Park
presents the third annual*

LONG ISLAND
Orchid Festival 2015

Orchid Vendors from Around the World

May 29 - 31, 2015
9 AM to 5 PM

Planting Fields Arboretum
State Historic Park
Conference Center
1395 Planting Fields Road
Oyster Bay, NY 11771

Admission is Free
(Planting Fields Arboretum Parking \$8 per car.)

For more information email
festival@longislandorchidsociety.org
or visit
longislandorchidsociety.org
or plantingfields.org

The May 2015 AOS Corner-

From the desk of Laura Newton, Membership and Affiliated Societies Chair

The upcoming **Webinars**:

- On 5/27/15 at 8:30p.m. EST, **John Salventi** will present - **Orchid Nutrition, Taking the Mystery out of Feeding Your Orchids**. This is for **members only**.
- On 6/10/15 at 8:30p.m. EST, **Ron McHatton** will present another **Greenhouse Chat**. This webinar is **open to all!**

The **May** issue of **Orchids** has many great articles, which you may have already seen if you are a current AOS member, but for those of you who are not, here is some of what you will find inside this issue of our monthly bulletin, which should entice you into becoming a member.

- **Embreea- a monster orchid in 3D**, by **Thomas Miranda**, gives a great overview of this fascinating genus of enormous, yet short-lived flowers.
- **Disas** by **Peggy Alrich and Wesley Higgins**, is a beautifully illustrated look at many variations in color of this African genus.
- There is a new series of articles called **Growers Profile**, highlighting a different grower each month. This month we get to peek into **Paph Paradise** and **proprietor David Sorokowsky** with a Q&A that gives up some insight into how you can start with a “box store” purchase and end up in a full-blown addiction into growing, hybridizing and selling award-winning orchids, as explained in the questions that **Kathy Barrett** asks.
- **Selecting a Pot** by **Sue and Terry Bottom**, is a great tutorial on how to select the perfect pot for your plant, for your growing conditions.

Orchid Shows taking place this month (for more in-depth information, please check out the complete calendar on www.aos.org):

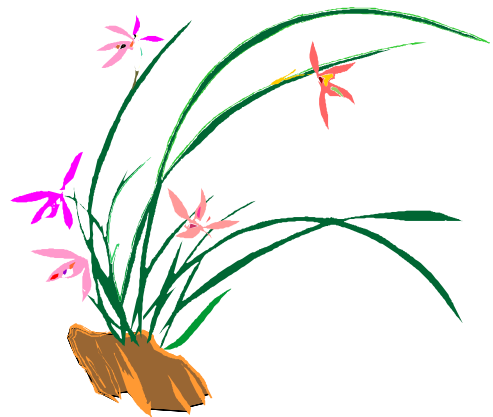
Another great thing that you can find on our website is the new “**Kid’s Corner**” tab, by **Sandy Stubbings** of the education committee. She provides great ideas on how to encourage and foster interest in orchids for the young children in our lives, so please check it out!

I have enjoyed sending the AOS Corner out for the past year, but alas my term as chair has come to an end.

George Hatfield, an AOS Trustee, will be taking over as chair of the Membership and Affiliated Societies Committee. George is a fabulous orchid grower and Judge. I look forward to seeing his vision for our societies!

Let’s grow together,

Laura Newton



Directions to Cheshire Senior Center 240 Maple Avenue, Cheshire, CT 06410

From New Haven, CT:

- Take I-91 North to exit 10 (Route 40)
- Follow Rt. 40 to the end (last exit—for Mount Carmel/Cheshire)
- Turn right onto Route 10 North (Whitney Ave.)

At the traffic light for the intersection of Rt. 10 and Routes 68/70 West

Turn left onto Main St. —which runs into Maple Ave. at the next traffic light.

Proceed straight ahead on Maple Ave. Cheshire Senior Center is # 240 on the right after the Victorian House Restaurant.

From Waterbury:

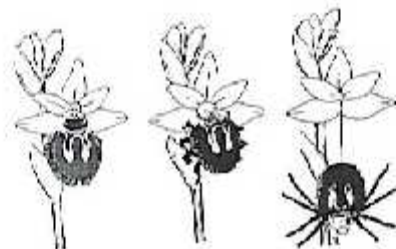
- Take I-84 East to Exit 26 (Cheshire/Route 70)
 - The Exit ramp automatically forces you to go right and follow Rt. 70.
 - At the end of Rt. 70 (facing the Cheshire Post Office) turn left at the light onto Maple Ave.
- The Cheshire Senior Center is # 240 on the right after The Victorian House Restaurant.

From Hartford via I-91:

- Take I-91 South to Exit 18 onto Route 691 (Meriden/Waterbury)
 - Take Exit 3 off Rt. 691 and turn left at the traffic light onto Rout 10 South.
 - Continue through seven traffic lights. At the 8th traffic light bear right onto Maple Avenue.
- The Cheshire Senior Center is # 240 on the left after the Cheshire Fire Department.

From Hartford via I-84:

- Take I-84 West to Exit 27 onto Route 691 (Meriden)
 - Take Exit 3 off Rt. 691 and turn right at the traffic light onto Route 10 South.
 - Proceed through six traffic lights.
 - At the 7th traffic light bear right onto Maple Ave.
- The Cheshire Senior Center is # 240 on the left after the Cheshire Fire Department.



— Drawing by M. R. Sheehan